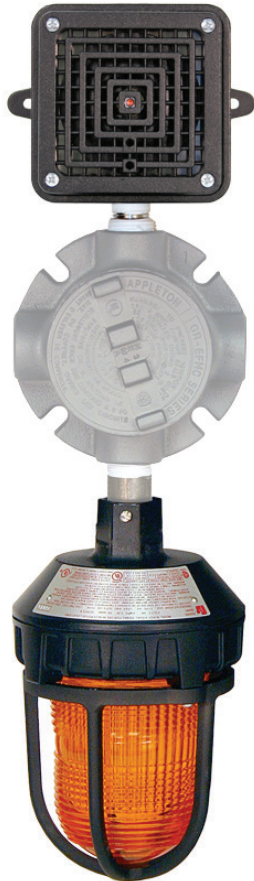




TELEDYNE DETCON
Everywhereyoulook™

AV1-C1D2C

Hazardous Duty
Alarm Station
Class 1, Division 2
Continuous Tone



Description

Detcon Model AV1-C1D2C audio visual alarm stations are designed for installation and use in heavy industrial environments. The complete unit is self-certified for Class 1 Div 2 hazardous area use. The alarm station consists of a warning light and a siren. The warning light can consist of any dome color such as amber, blue, clear, green, red, or magenta. The audible alarm is capable of producing coded blasts or sustained tones. Model AV1-C1D2C alarm assemblies are specifically designed for hazardous locations or corrosive environments where a very bright visual and high decibel alarm signal is required. The high-intensity strobe light provides 80 flashes per minute. The siren produces a noise level of 100dbA @ 10 feet.

The light is UL listed and CSA Certified for Class I, Division 2, Groups A, B, C and D; Class II, Division 1, Groups E, F, and G; and Class III. The siren is UL listed and CSA Certified for Class I, Division 2, Groups A, B, C and D; Class II, Division 2, Groups F, and G. Model AV1-C1D2C alarm components are pre-assembled and mounted on a four-way junction box with 3/4" NPT ports. The assemblies are NEMA 4X rain tight and suitable for installation in harsh locations. Overall dimensions are 21"H x 6"W x 10"D.





TELEDYNE DETCON
Everywhereyoulook™

AV2-C1D2C

Hazardous Duty
Alarm Station
Class 1, Division 2
Continuous Tone

Description

Detcon Model AV2-C1D2C audio visual alarm stations are designed for installation and use in heavy industrial environments. The complete unit is self-certified for Class 1 Div 2 hazardous area use. The alarm station consists of a combination of two warning lights and a siren. Warning lights can consist of any combination of dome colors such as amber, blue, clear, green, red, or magenta. The audible alarm is capable of producing coded blasts or sustained tones. Model AV2-C1D2C alarm assemblies are specifically designed for hazardous locations or corrosive environments where a very bright visual and high decibel alarm signal is required. The high-intensity strobe lights provide 80 flashes per minute. The siren produces a noise level of 100dba @ 10 feet.

The lights are UL listed and CSA Certified for Class I, Division 2, Groups A, B, C and D; Class II, Division I, Groups E, F, and G; and Class III. The siren is UL listed and CSA Certified for Class I, Division 2, Groups A, B, C and D; Class II, Division 2, Groups F, and G.

Model AV2-C1D2C alarm components are pre-assembled and mounted on a T-shaped epoxy painted aluminum bracket with pre-drilled mounting holes that accommodate U-bolts and up to 2 1/2" diameter pipe stands. The assemblies are NEMA 4X rain tight and suitable for installation in harsh locations. Overall dimensions are 22"H x 16.5"W x 10"D.

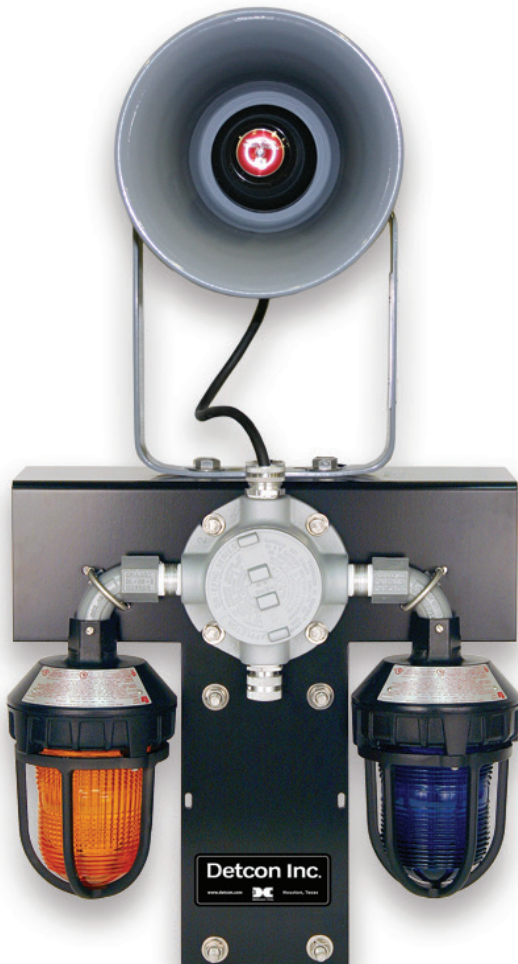




TELEDYNE DETCON
Everywhere you look™

AV2-C1D2M

Hazardous Duty
Alarm Station
Class 1, Division 2
Multitone



Description

Detcon Model AV2-C1D2M audio visual alarm stations are designed for installation and use in heavy industrial environments. The alarm station consists of a combination of two warning lights and a siren. The complete unit is self-certified for Class 1 Div 2 hazardous area conditions.

Warning lights can consist of any combination of dome colors such as amber, blue, clear, green, red, or magenta. The audible alarm features 3 field selectable tones: Wail, Yelp and Horn. Model AV2-C1D2M alarm assemblies are specifically designed for hazardous locations or corrosive environments where a very bright visual and high decibel alarm signal is required. The high-intensity strobe lights provide 80 flashes per minute. The siren produces a noise level of 98dba @ 10 feet in a wide angle sound dispersion pattern. The lights are UL listed and CSA Certified for Class I, Division 2, Groups A, B, C and D; Class II, Division I, Groups E, F, and G; and Class III. The siren is UL listed for Class I, Groups B, C and D.

Model AV2-C1D2M alarm components are preassembled and mounted on a T-shaped epoxy painted aluminum bracket with pre-drilled mounting holes that accommodate U-bolts and up to 2 1/2" diameter pipe stands. The assemblies are NEMA 4X rain tight and suitable for installation in harsh locations. Overall dimensions are 33"H x 16.5"W x 18.5"D.

